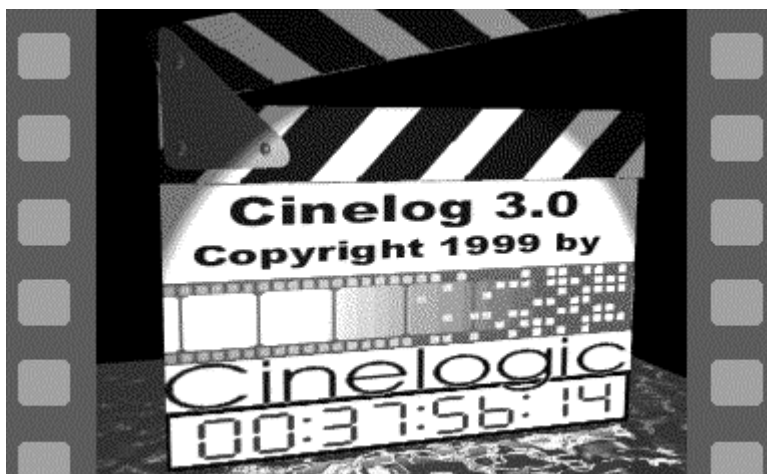


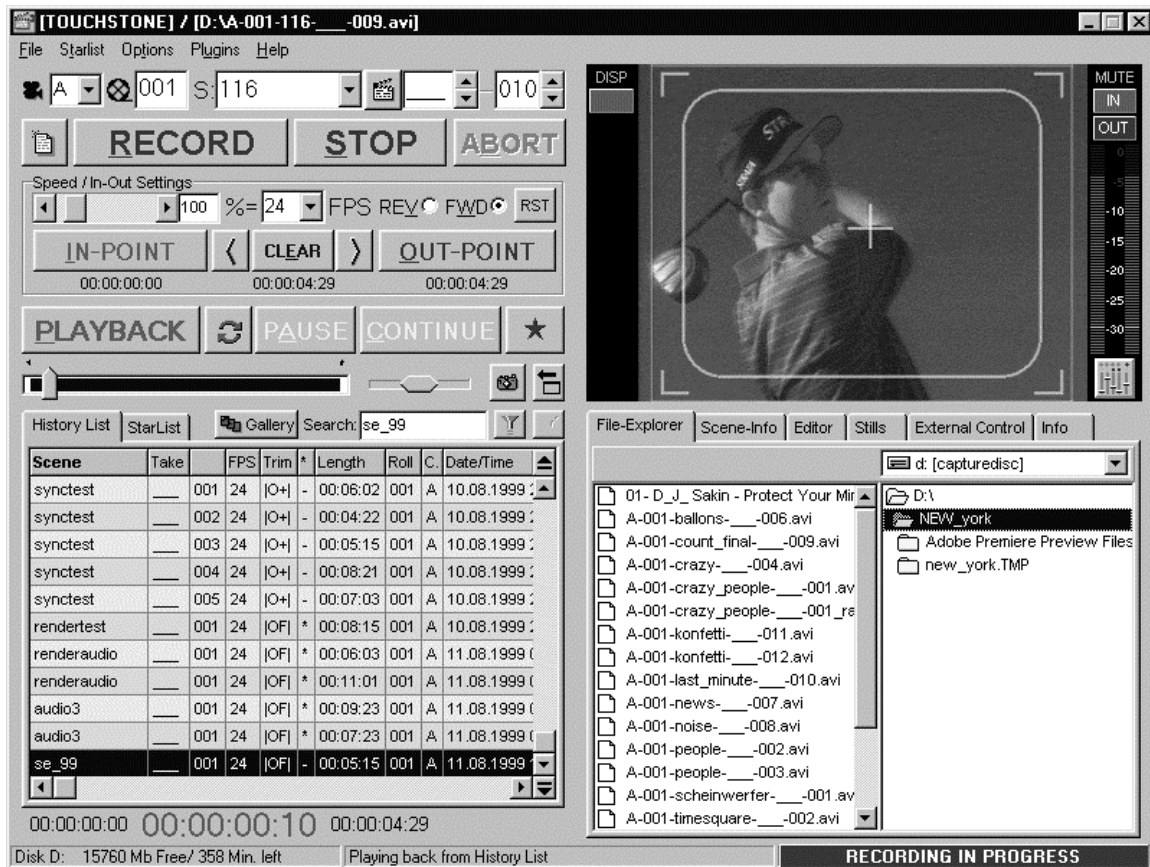
Cinelog 3.0

Product Specification Sheet

12/03/99



Cinelog 3.0 Main-Screen



With this new version of its field-proven Video-Assist Software “Cinelog”, Cinelogic introduces a number of exciting new features to make your life as a Video-Assist Operator easier. Along with standard features like one-click recording and playback, we have added a large selection of innovations and improved features. Please take a minute to look at this abbreviated list of what Cinelog version 3 has to offer:

- **New Database Engine**

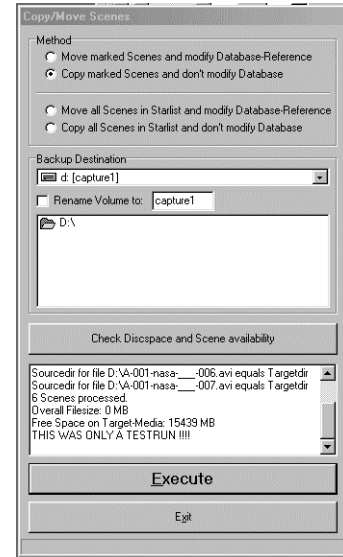
The Database-Engine that keeps track of your takes has been completely remodeled for this new Version of Cinelog allowing you to search, filter and sort scenes with a click of a button. Furthermore the database is now able to easily handle more than 10.000 takes.

- **Removable Media Support**

The new removable media support helps you keep track of your takes even if these have been copied to a removable drive for backup or to a network-drive on another computer. This way you can expand your storage-capability to meet the requirements of feature-film projects. Cinelog will automatically remind you to insert the correct media if you try to playback a take that's not accessible at the moment.

- **Rehearsal- Feature**

With our new rehearsal-feature it's easy for you to distinguish between 'real' takes and rehearsals. You can change between these two modes even after you've started recording.



- **Picture-Gallery**

The Picture-Gallery helps you to keep track of your takes by storing a still-image for every scene in your project. Along with the automatically triggered printout of your video-printer you are now able to visually look up a scene.

- **Multiple In-/Out- Points Support**

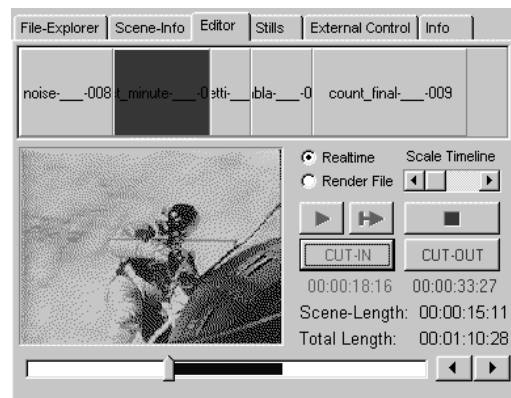
Cinelog 3.0 allows you to set multiple In- and Out-Points while recording a scene. Each individual sub-take can have its own property like a custom note or speed and can be added to the Starlist for direct access.

- **Internal Frame-Accurate Real-time-Editor**

The new Cuts-Only Editor in Cinelog allows you to edit and assemble takes that you can instantly play back without rendering. (Miro DC30plus only)

- **Advanced Scene-Management Functions**

With growing numbers of takes Cinelog helps you to organize your data so that you don't lose track and can concentrate on your work.

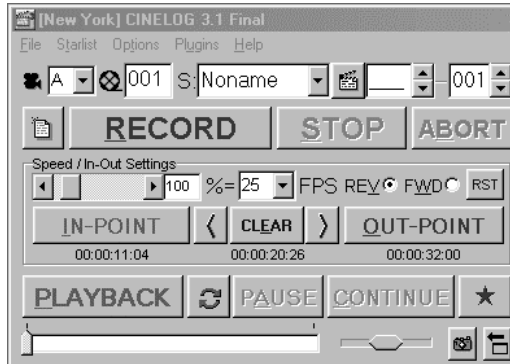


- **Single-Frame Capture & Assembly**

Cinelog 3.0 allows you to record individual frames that are automatically assembled into a take ready for playback. This can be used for Stop-Motion animation, Motion-Control or other special-effects shots.

- **On-Screen VU-Meter**

The new big Audio-VU-Meter helps you to find the ‘proper’ settings for recording.



- **Major Improvements to the User Interface**

Parts of the User-Interface have been redesigned to optimize usability and speed up your work

- **Time-lapse Recording**

Time-lapse Recording allows you to take one or multiple frames in adjustable intervals, which are automatically assembled into a new take.

- **Full Screen Playback-Mode**

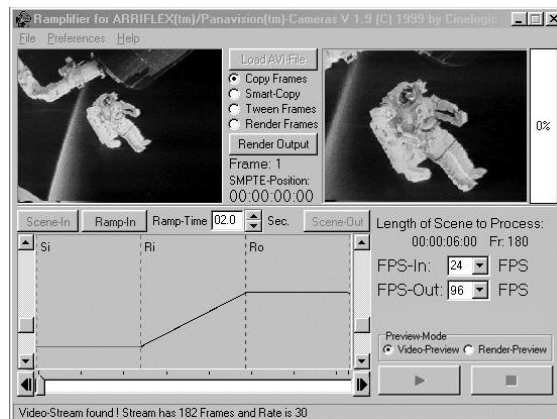
With one click of a button you can now enlarge the Playback-area to full-screen.

- **Configurable List-Displays**

The History- and Starlist have been reworked to be fully customizable. You can now reorder the columns, resize them and store your settings.

- **High-Quality Rendered Ramp-Preview and real-time Ramp-Preview**

Among other plugins our new Ramp-Preview plugin allows you to previsualize Speed-Ramps either as a real-time instantaneous preview or a high-quality rendered preview that comes close to the final film.



- **“Security”- Functions**

Rental houses may want to limit access to certain critical functions in Win95/98 to prevent customers from reconfiguring their systems. Cinelog allows you to hide most of operating system so that the computer becomes a “Recording and Editing Only”-System.

- **Logging and controlling of LANC-VCR's**

If you are using a VCR to back up your work, Cinelog helps you to keep track of your scenes on tape by storing the counter-position of your VCR. You can even use Cinelog to control your VCR.

- **Cinelog I/O-Card for External Controls**

Our Custom-developed PC-Card works in concert with our software and opens the door to many new features and possibilities:

- Four External Control-Lines

External Control-Lines can be used to remotely trigger events in Cinelog like recording or playback this feature can be used along with Single-Frame Recording for Motion-Control or Stop-Animation.

- Four External Status-Lines

The external status-lines can be configured to reflect the status of the software or to trigger events by the software like controlling your video-printer or sending a signal on a certain frame while playing back.

- Hardware Monitoring

The hardware-monitor constantly measures system-critical parameters of your computer like voltage and temperature and warns you if one of these values reaches a threshold.

- Scene-Info Character-Generator

The software controlled Character-Generator allows you to superimpose your outgoing picture with information like the name of the scene currently playing. These characters also show up on your video-printer printout.

Features already covered in Version 2.0:

- **One-Click Recording / Playback**

With one click of a button you can start recording. Cinelog takes care of numbering your takes while recording. With another click you can start the playback.

- **Real-time Slow-motion / Reverse Playback**

Set a speed between 4 FPS to 800 FPS forwards or backwards and play it in real-time.

- **On-Screen Video-Overlay**

One quarter of the screen displays a live overlay of the picture currently recording/playing.

- **List-Playback and Loop-Playback**

Select multiple takes for list-playback, loop a single take, or loop the whole list.

- **In-/ Out- Points for every scene**

In- and Out-Points for a scene can be set during recording or afterwards to get you to the 'action' fast.

- **User-Editable Notes**

Add individual notes to every take in the database to help you organize you takes.

- **Automatic Take-Number Advance**

After you've recorded a take Cinelog will automatically advance to the next take number.

- **Separate Lists to keep track of your "Starred" Takes**

Cinelog's unique "Starlist" helps you to keep track of those special takes that stand out from the rest. By keeping track of these outstanding performances the operator can respond quicker to playback demands.

- **Large and Easy to see Record Flags even on LCD-Monitors**

- **Drag'n Drop Support with other Editing Software**

Via Drag'n Drop you can easily transfer a scene into other Programs like Adobe™Premiere or Ulead Media-Studio™.

Availability:

The Cinelog I/O-Board will be available Q1/2000

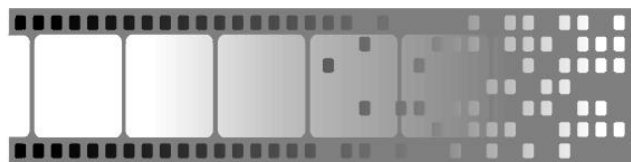
For purchase information and update conditions contact Cinelogic, Northridge.

System Requirements:

	Minimum Requirement	Optimal Configuration
Operating System	Win 95	Win 98SE
Memory	16 MB	128 MB
Processor	Intel P166 Mhz	Intel PII(as faster ,as better..)
System Harddisc	1 GB	2 GB
Capture Harddiscs	1 * 8 MB	3 * 37 MB UDMA
External Storage Device	-	2GB Castlewood™ Orb-Drive or Iomega™ Jaz
Serial Connectors	-	2
Parallel Connectors	-	1
Printer	-	Thermo Lineprinter
Input-Device	Mouse	Trackball or Pen-Based System
Graphic-Card	S-VGA 800x600 8-Bit*	ATI Rage-Pro Based Card
Monitor	14"-Monitor	15" LCD-Monitor 800x600 Res.
System Bus	2 PCI-Bus, 1 ISA-Bus, EIDE	2 PCI-Bus, 1 ISA-Bus, 2 *EIDE
Capture-Card	Busmaster-PCI Video-Capture Card with at least 10:1 Compression.	Miro DC30 Pro
Backup-System	-	LANC-Control VCR / Visca VCR

* Full Overlay Support only with ATI-Based Graphiccards

** Certain features like real-time editing are only available with the Pinnacle Miro DC30 plus



Cinelogictm

17825 Osborne Street, Northridge, CA 91325
(818)772-4777 fax (818)772-4733 e-mail:sam@videoassist.com

Specifications subject to change without notice.

'Windows 95, Windows 98' are registered Trademarks of Microsoft, Redmond
'Adobe Premiere' is a registered Trademark Adobe Inc., San Jose
'Cinelogic' is a registered Trademark of Sam Cherroff, Northridge